



TYPE OF PRODUCT

Projectors with LED modules for hazardous areas **II 2 G Ex d IIB T5 Gb** and **II 2D Ex tb IIIC 95° Max Db IP66**, according to the directive 2014/34/EU. Zones 1, 21 and 2,22.

MECHANICAL CONSTRUCTION

Housing in aluminium with grey polyester powder coating RAL 7037, 1000 h salt fog resistance according to ASTM B117-11. Stainless steel screws and accessories.

LED MODULES

Optimised LED modules to ensure 100 Lm/W efficiency and extended lifetime at 25°, L70 to 100.000 hours.

OPTICS

Tempered glass diffuser, 110° opening angle as standard.

TEMPERATURE

Reference ambient temperature T_a : 25°C.

Operating temperature range : from -30°C to +50°C (with impact on the lifetime).

POWER SUPPLY

Luminaires with integrated 100-277 V electronic power supply (EPF).

INSTALLATION

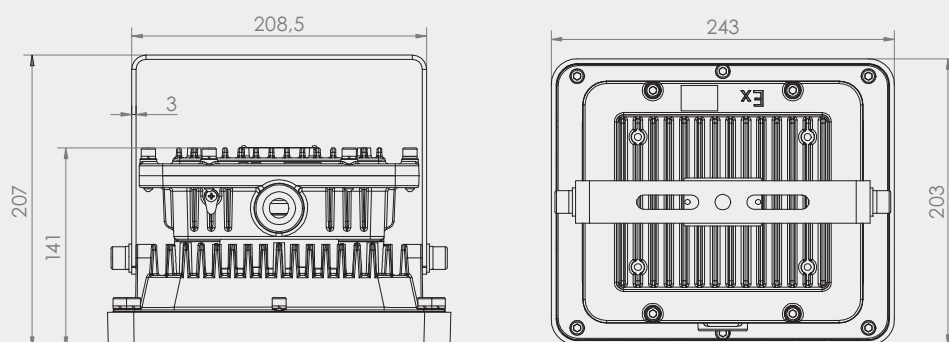
Lighting supplied with a mechanical clamp without angle mark.

WIRING

Connection inside the luminaire, without possibility of transplanting.



DIMENSIONS (mm)

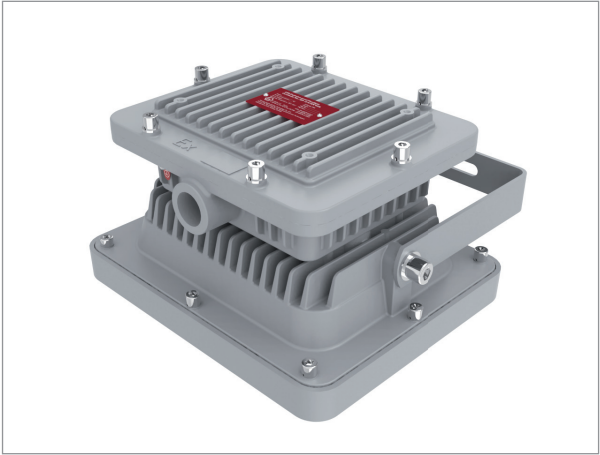
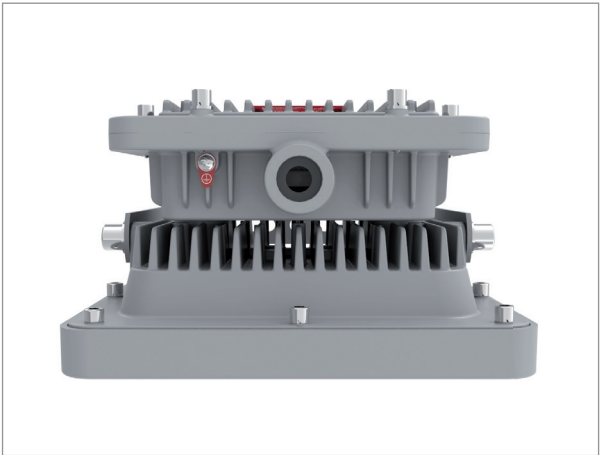


REFERENCES AND FEATURES

CODE	REFERENCE	P (W)	Emitted flux (Lm)	Efficiency (Lm/W)	Colour temperature (K)
<u>ATEX - II 2 G Ex d IIB T5 Gb and II 2D Ex tb IIIC 95° Max Db IP66</u>					
SUR1159EPF	FEL B-60 LED 203/243 6000/1 60/740 EPF	60	6000	100	4000

Light and power output tolerance +/-10%

DÉTAILS PHOTOGRAPHIQUES



Standards and warranty

Compliance : information on the compliance of our products with the relevant standards and directives is available on our website.

Warranty : our warranty conditions are indicated in our general terms and conditions of sale. There are special conditions depending on the product range. These conditions can be checked on our website : www.isoone-cleanroom-lighting.com/conditions-generales-de-vente/

Temperature and switches on : the operating temperature and the number of daily switches have an influence on the lifetime of the products. Our luminaires are designed to withstand at least 15.000 switches on following EU 1194/2012.

Please consult us for more information.

Note

ISOONE reserves the right to modify or update this document at any time within the framework of the technological evolution and the updating of our technical documentation. Despite the care taken in the design and the updating of this card, it can not under any circumstances constitute a contractual document.